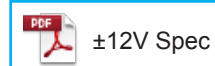
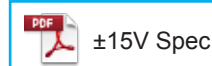


HS-PKD



- Rated current 50A ~ 150A
- Realized high precision and compact size
- Superior in response, linearity and temperature characteristics
- Both the voltage output and the current output were prepared
- For additional ±15V and ±12V products, contact sales@dgseals.com or click below

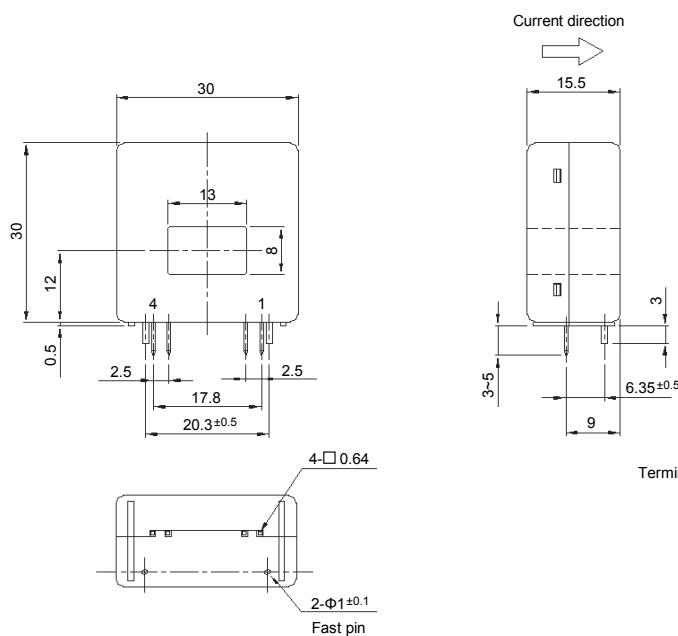


Applications

Inverters, Servo drivers, Power supply equipment, NC machine tools

Dimensions

(mm)



Current direction



- Terminal No. 1 - (+) terminal
 2 - (-) terminal
 3 - GND
 4 - Output

Weight : 16g

General tolerance: ±0.5

Specification

Ta=25°C

Type	Voltage output type			Current output type	
	HS-PKD050V4B15	HS-PKD100V4B15S	HS-PKD150V4B15S	HS-PKD050A0025B15	HS-PKD100A005B15
Rated current [If]	±50A	±100A	±150A	±50A	±100A
Continuously flowing DC current	±50A	±72A	±108A	±50A	±72A
Saturation current [Is]	±125A	±250A	±375A	±100A	±150A
Linearity limits	0~±100A	0~±200A	0~±300A	0~±100A (RL=100~180Ω)	0~±150A (RL=120Ω)
Rated output	+If V0+4V±1% (RL=10kΩ)			I0+25mA±1%	I0+50mA±1%
	-If V0-4V±1% (RL=10kΩ)			I0-25mA±1%	I0-50mA±1%
Residual output [V0, I0]	Within ±20mV			Within ±0.2mA	
Output linearity	Within ±0.5%				
Second coil resistance	Approx. 47Ω		Approx. 63Ω	Approx. 38Ω	
Response time	Within 1μs (The smaller one on either at di/dt = 100A/μs or If/μs.)				
Response performance	Within 10%				
Hysteresis voltage range	Within 20mV			Within 0.2mA	
Output Temp. Coef.	Within ±0.01%/°C				
Residual output Temp. Coef.	Within ±0.8mV/°C			Within ±0.01mA/°C	
Control power supply	±15V±5%				
Consumption current	20mA+(Input current/2500)		20mA+(Input current/3200)	20mA+(Input current/2000)	
Operating Temp.	-10°C~+80°C				
Storage Temp.	-15°C~+85°C				
Dielectric withstand voltage	2500V AC 50/60Hz 1minute				
Insulation resistance	Not less than 500MΩ 500V DC				

Note1) The indicated residual voltage is the one after the core hysteresis is removed.

Note2) Energization time of saturation current shall be within 1 second.

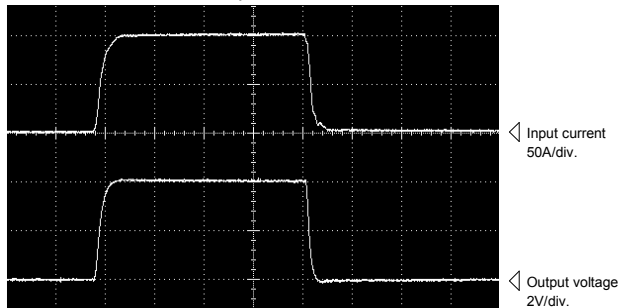
Note3) Energization time of continuous live DC current x150% shall be within 1 minute.

Characteristics chart

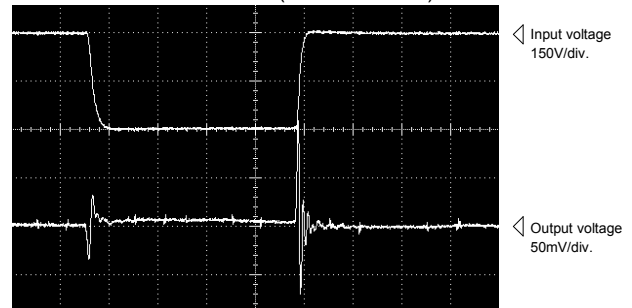
HS-PKD100V4B15S

5μs/div. Time base

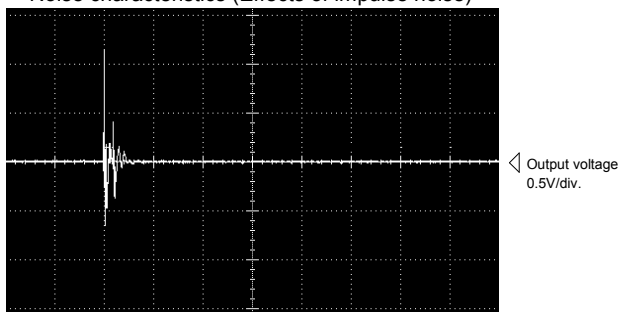
Pulse current response characteristic



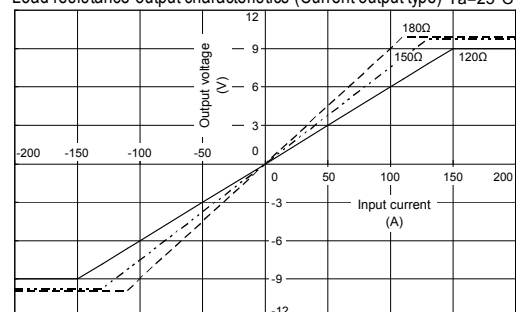
Noise characteristics (Effects of dv/dt)



Noise characteristics (Effects of impulse noise)



Load resistance-output characteristics (Current output type) Ta=25°C



Note: The marks "◁" means 0V or 0A.