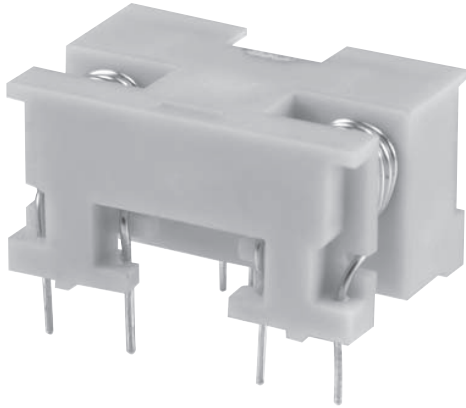


HC-PRZ



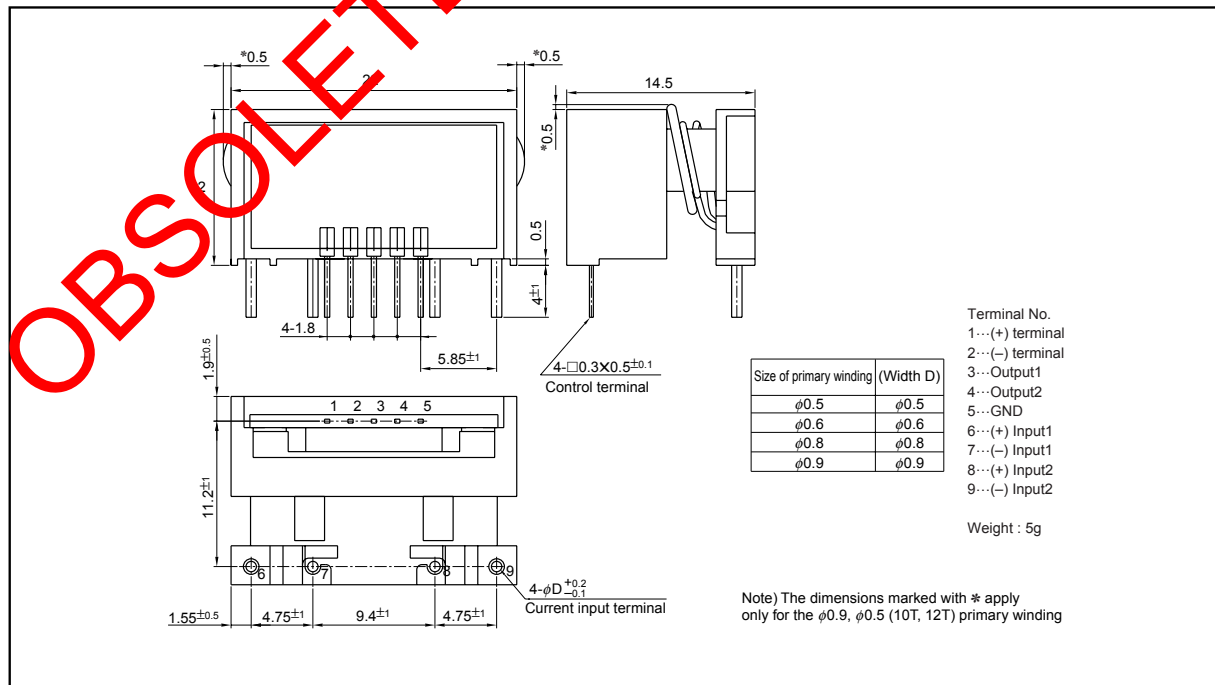
- Well isolated for European Standards
- Rated current ..... 3A ~ 20A
- Compact design : height has been kept down to 12.0mm
- Single-power supplies also available
- Two circuits can be measured at the same time.

Applications

Inverters, servo drivers, NC machine tools

Dimensions

(mm)



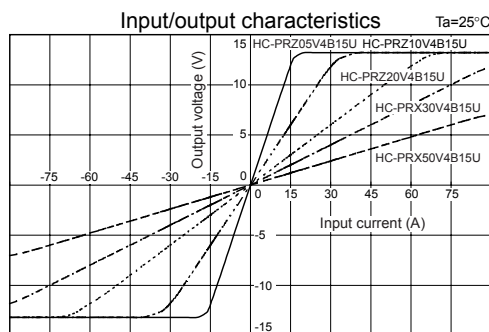
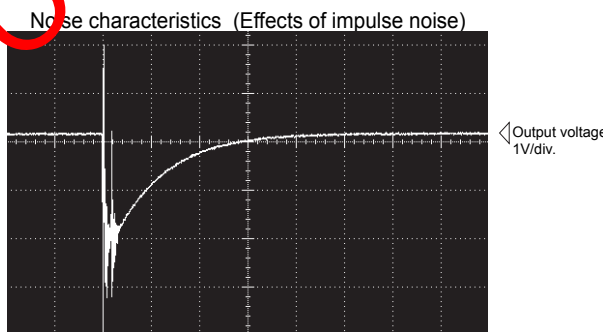
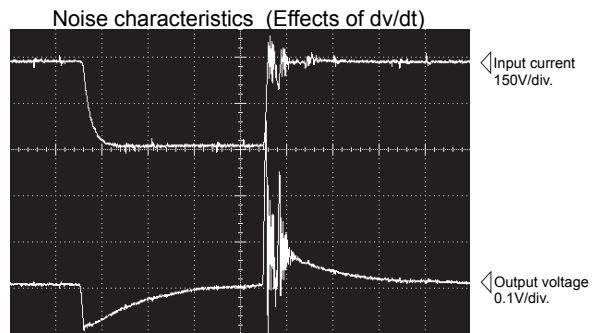
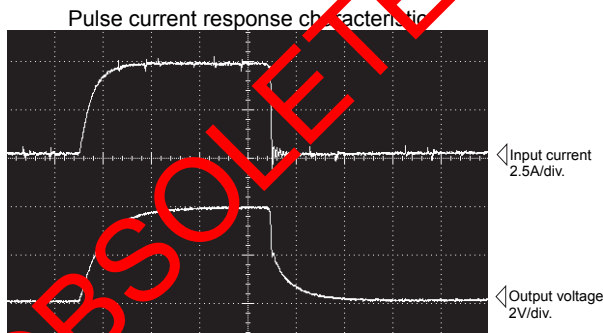
Specification Ta=25°C

Type	HC-PRZ03V4B15U	HC-PRZ05V4B15U	HC-PRZ10V4B15U	HC-PRZ20V4B15U
Rated current [If]	±3A	±5A	±10A	±20A
Saturation current [Is]	±9A	±15A	±30A	±45A
Linearity limits	0~±7.5A	0~±12.5A	0~±25A	0~±37.5A
Size of primary winding	φ0.5	φ0.5	φ0.8	φ0.8
Turns	10	6	3	2
Rated output [Vh]	±4V±1.5% (RL=10kΩ)(including the residual output)			
Residual output [Vo]	Within ±100mV			
Output linearity	Within ±1%			
Response time	Within 10μs (at di/dt=If/μs)			
Response performance	Within 10%			
Hysteresis voltage range	Within 120mV			
Output Temp. Coef.	Within ±0.1%/°C			
Residual output Temp. Coef.	Within ±5mV/°C			
Control power supply	±10V±5%			
Consumption current	Within 40mA			
Operating Temp.	-10°C~+80°C			
Storage Temp.	-15°C~+85°C			
Dielectric withstand voltage	2500V AC 50/60Hz 1minute			
Insulation resistance	Not less than 500MΩ 500V DC			

Note1) The indicated residual voltage is the one after the control hysteresis is removed.

Note2) For continuously flowing DC currents, see the principal characteristics marked by an asterisk (※) on page 1-5.

Characteristics chart HC-PRZ05V4B15U



Note : The mark "◁" means 0V or 0A.